



<http://bavc.org/qctools>

<http://github.org/bavc/qctools>

@BAVCpreserve #ffmpeg #amia14 @dericed



NATIONAL
ENDOWMENT
FOR THE
HUMANITIES

bavc
BAY AREA VIDEO COALITION





JeromeMartinez

#1

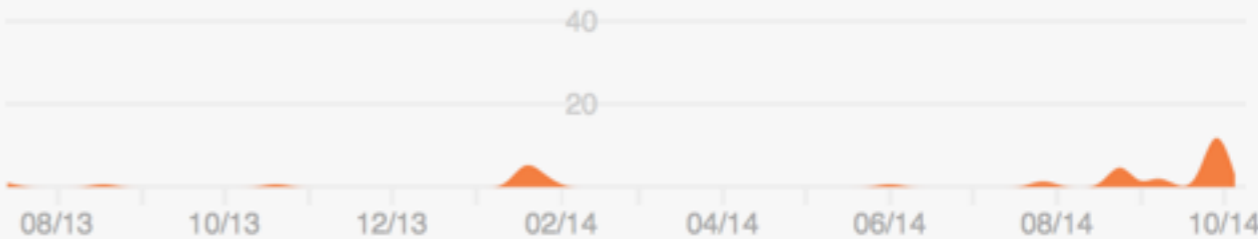
93 commits / 8,893 ++ / 3,859 --



dericed

#2

46 commits / 23,615 ++ / 13,362 --



dlandes

#3

15 commits / 1,019 ++ / 721 --



bturkus

#4

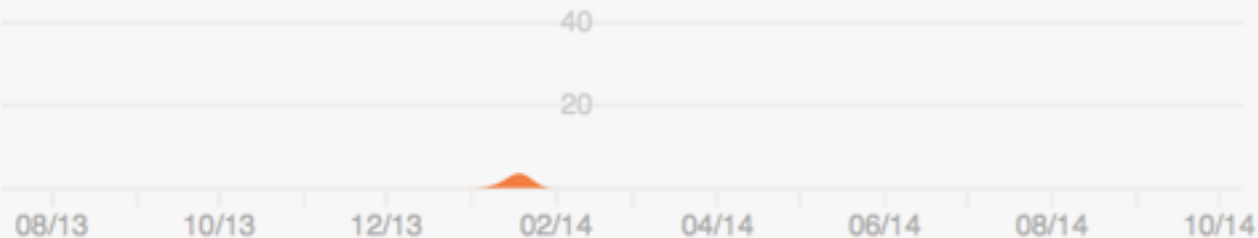
8 commits / 62 ++ / 8 --



ablwr

#5

6 commits / 156 ++ / 30 --



epiil

#6

1 commit / 3 ++ / 4 --















- FFmpeg
- About
- News
- Download
- Documentation
- Community
 - Mailing Lists
 - IRC
 - Forums
 - Bug Reports
 - Wiki
- Developers
 - Source Code
 - Contribute
 - FATE
 - Code Coverage
- More
 - Donate ❤️
 - Hire Developers
 - Contact
 - Security
 - Legal

FFmpeg

**A complete, cross-
platform solution to
record, convert and
stream audio and video.**



Converting videos and audios has never been so easy.

```
$ ffmpeg -i input.mp4 output.avi
```

FFmpeg

- About
- News
- Download
- Documentation
- Community
 - Mailing Lists
 - IRC
 - Forums
 - Bug Reports
 - Wiki
- Developers
 - Source Code
 - Contribute
 - FATE
 - Code Coverage
- More
 - Donate ❤
 - Hire Developers
 - Contact
 - Security
 - Legal

9.81 signalstats

Evaluate various visual metrics that assist in determining issues associated with the digitization of analog video media.

By default the filter will log these metadata values:

YMIN

Display the minimal Y value contained within the input frame. Expressed in range of [0-255].

YLOW

Display the Y value at the 10% percentile within the input frame. Expressed in range of [0-255].

YAVG

Display the average Y value within the input frame. Expressed in range of [0-255].

YHIGH

Display the Y value at the 90% percentile within the input frame. Expressed in range of [0-255].

YMAX

Display the maximum Y value contained within the input frame. Expressed in range of [0-255].

UMIN

Display the minimal U value contained within the input frame. Expressed in range of [0-255].

ULOW

Display the U value at the 10% percentile within the input frame. Expressed in range of [0-255].

UAVG

Display the average U value within the input frame. Expressed in range of [0-255].

UHIGH

Display the U value at the 90% percentile within the input frame. Expressed in range of [0-255].

UMAX

Display the maximum U value contained within the input frame. Expressed in range of [0-255].

VMIN

Display the minimal V value contained within the input frame. Expressed in range of [0-255].

VLOW

Display the V value at the 10% percentile within the input frame. Expressed in range of [0-255].

VAVG

Display the average V value within the input frame. Expressed in range of [0-255].



Issues

Pull requests

Labels

Milestones

Filters

is:open is:issue

13 Open 14 Closed

Author

Labels

Milestones

As

provide option for decoding hard timeout (was: Reporting gross decode failures) enhancement

#37 opened 9 days ago by acdha

Wishlist: Keyboard shortcuts to move between main timeline and power/filter window enhancement

#35 opened 20 days ago by epil

Grabbing the application window enhancement

#34 opened 21 days ago by michaelangeletti

Real-time playback in video analysis window? enhancement

#33 opened 22 days ago by michaelangeletti

List view doesn't populate some metadata columns enhancement

#32 opened 22 days ago by michaelangeletti

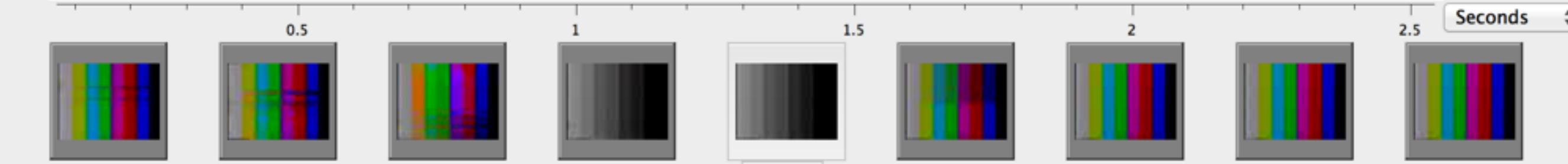
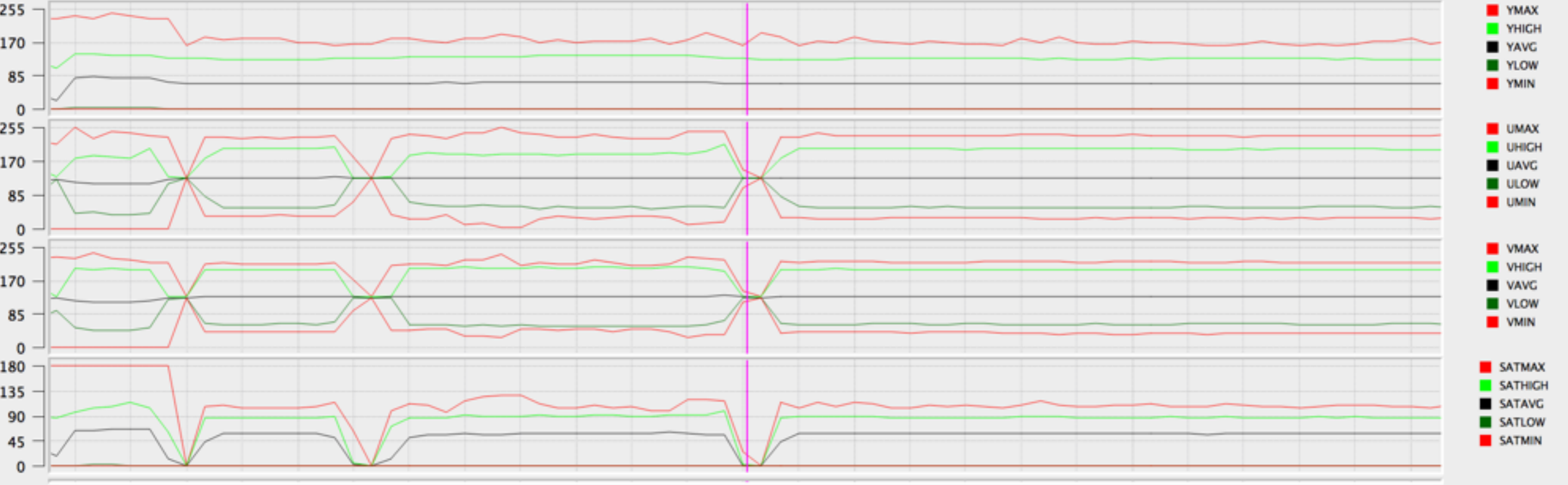
Wishlist: Vertical zoom in graph enhancement

#29 opened 23 days ago by pjotrek-b



/Users/drice/Desktop/6_DHC36.ffv1.flac.mov

Y U V YDiff UDiff VDiff Diffs Sat Hue TOUT VREP BRNG CropW CropH CropF MSEf PSNRf



Navigation controls including: a left arrow, buttons for playback speed (-2x, -1x, -0.5x), a 'Previous' button, a time display '00:00:01.306', a play button, a 'Frame 39' label, a 'Next' button, buttons for playback speed (+0.5x, +1x, +2x), and a right arrow.



Normal

Field Split

No display



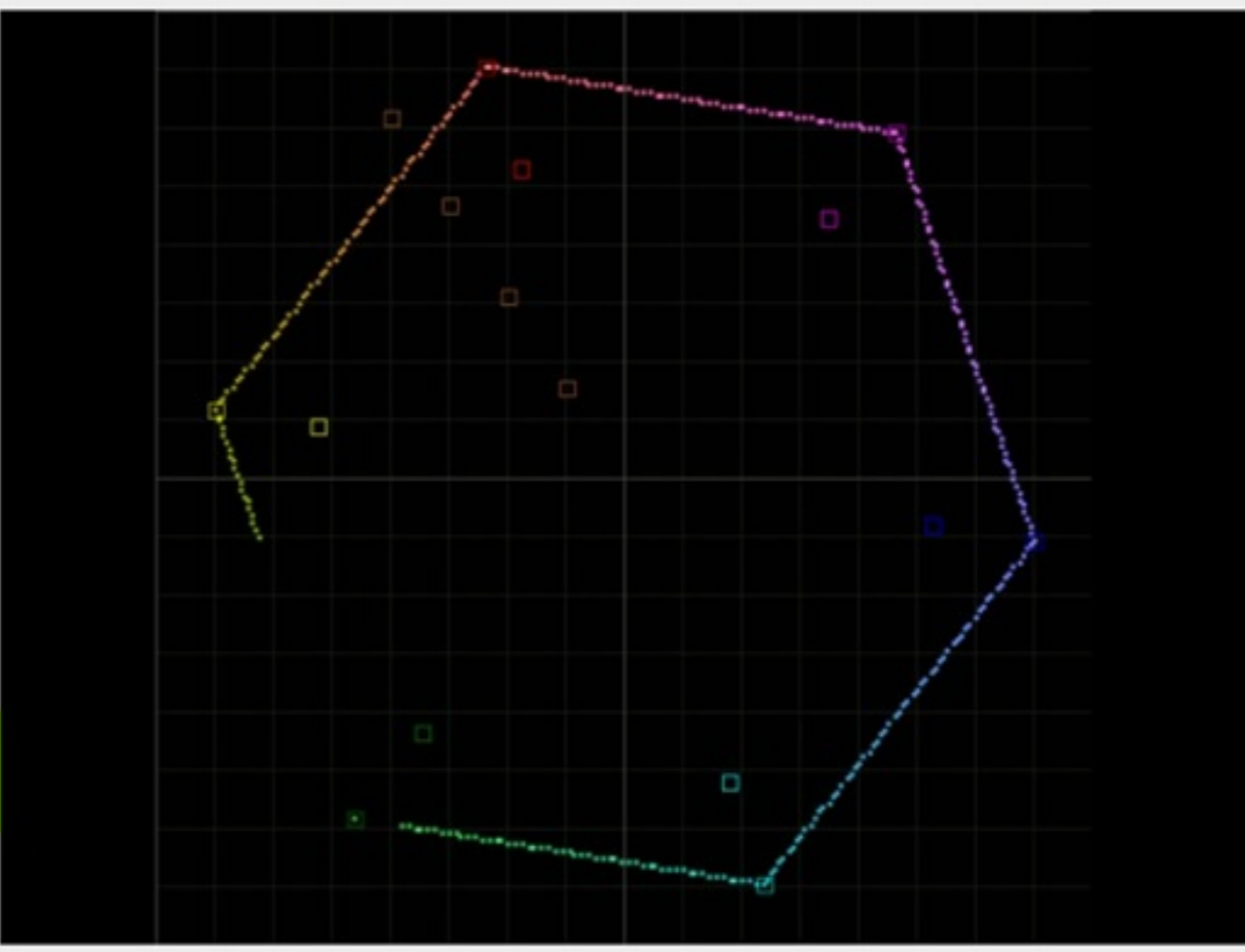
◀ -2x -1x -0.5x Previous 00:00:08.120 ▶ Frame 203 Next +0.5x +1x +2x ▶▶

Normal

Field Split

Field Split Brightness: 5

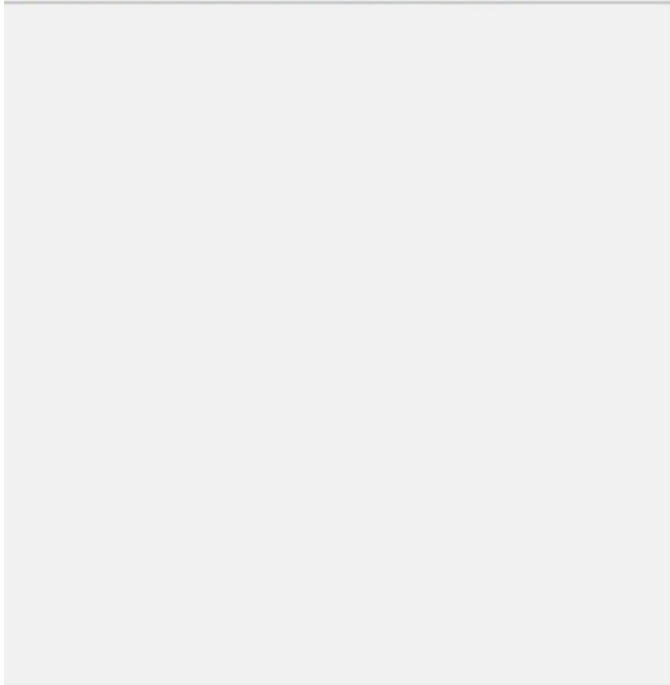
Vectorscope



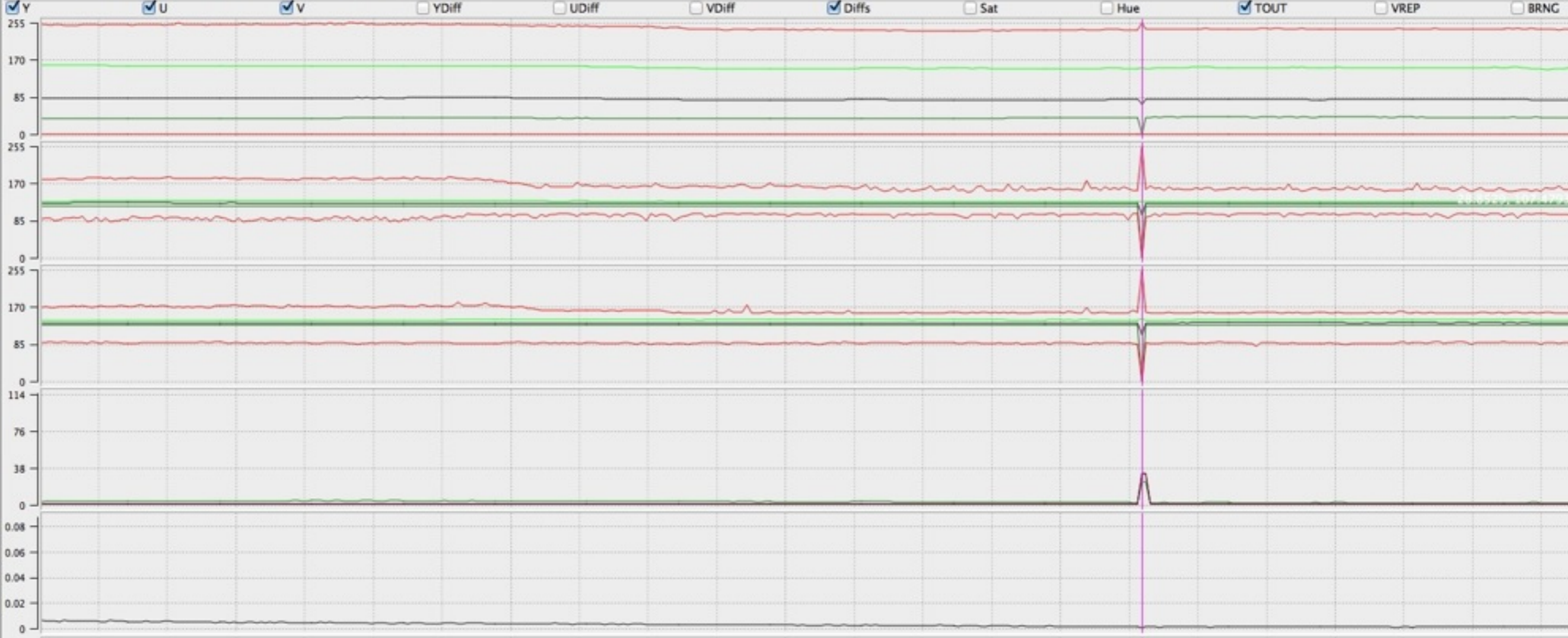
00:00:08.120



	Processed	Yav	Yrang	Uav	Vav	TOUTav	TOUTc	SATi	SATi	BRNGav	BRNGc	MSEfY	Format	Str
clipcanvas_14348_PRORES_HQ.mov	100%	96	153	124	133	0.00012230	0	200	169	100%	200	0	QuickTime / MOV	2



/Volumes/G-RAID 3/M1585_Asawa/Asawa_box_51/redo/gv959wj8933_pm.mov



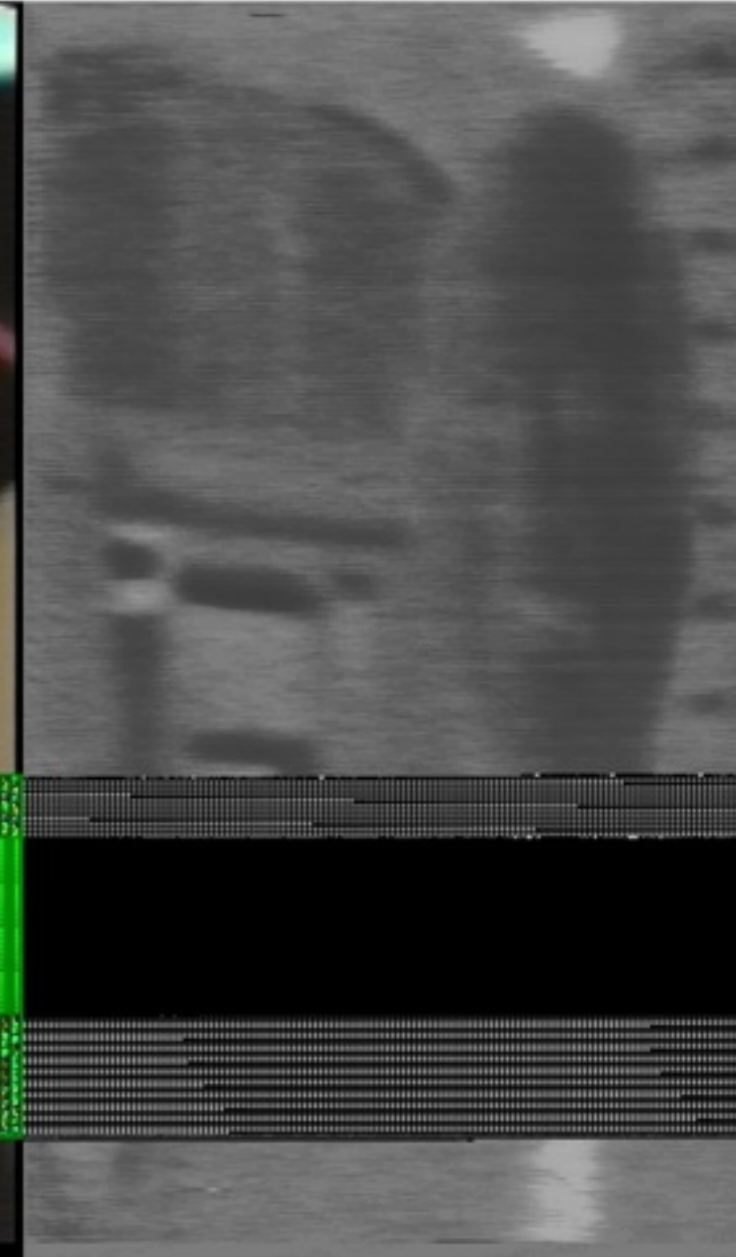
◀ -2x -1x -0.5x Previous

00:00:26.593



F

Normal Field Split



◀ -2x -1x -0.5x Previous

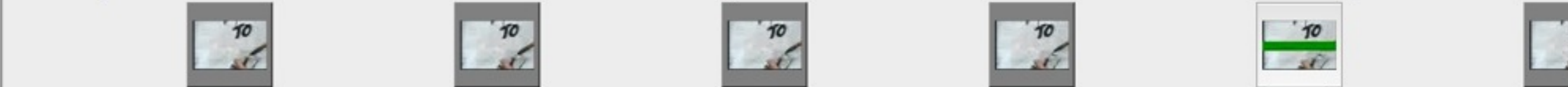
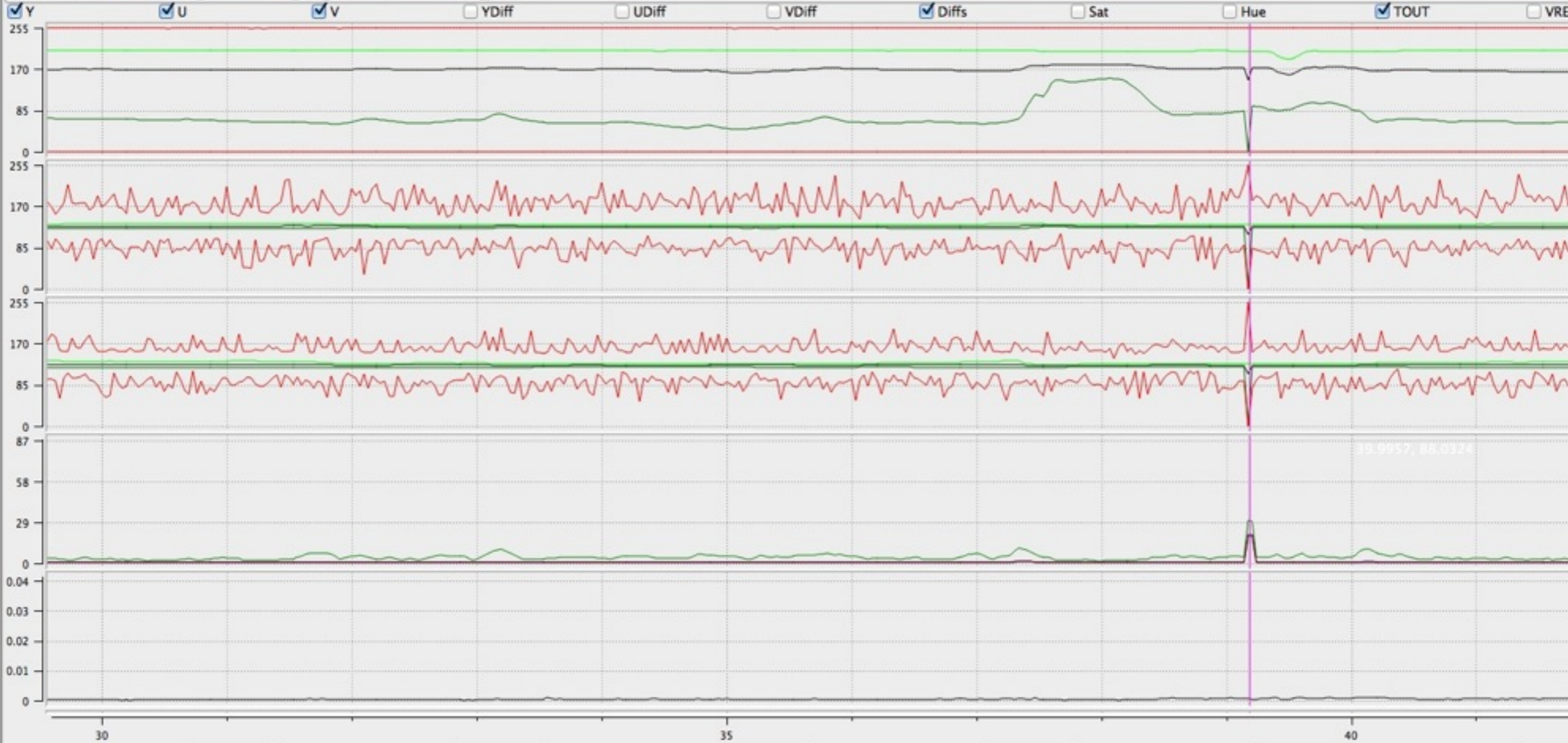
00:00:26.593



Frame 7



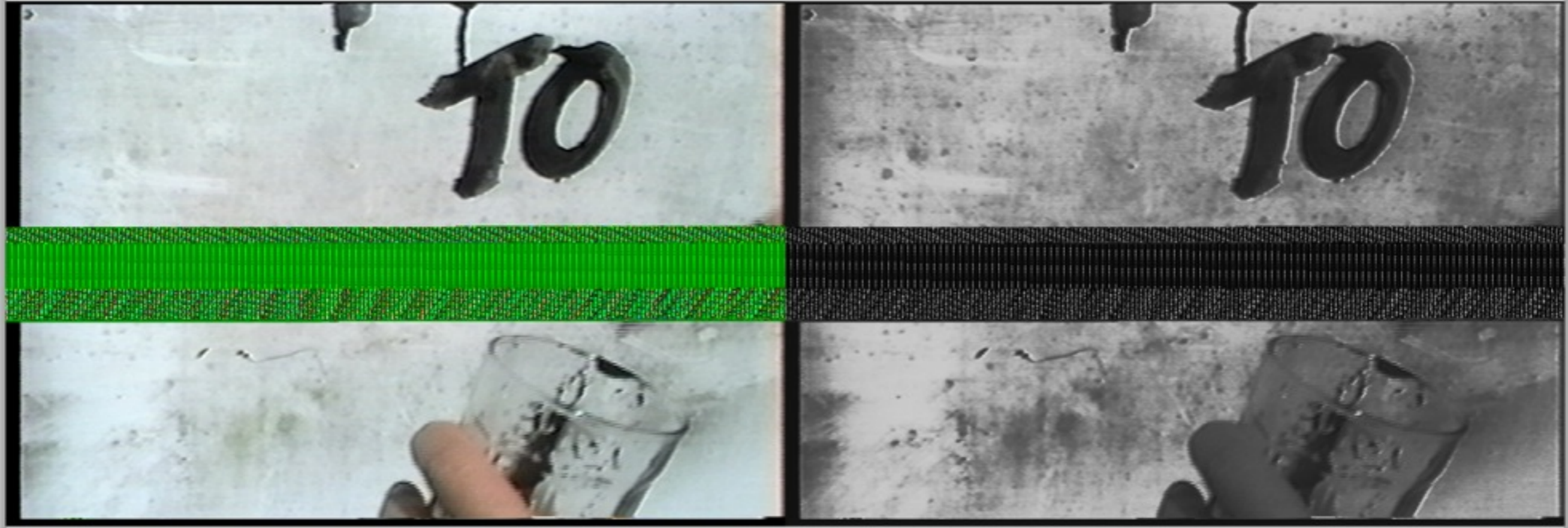
/Volumes/G-RAID 3/M1585_Asawa/Asawa_box_51/redo/wt154kz3786_pm.mov



◀ -2x -1x -0.5x Previous

00:00:39.173

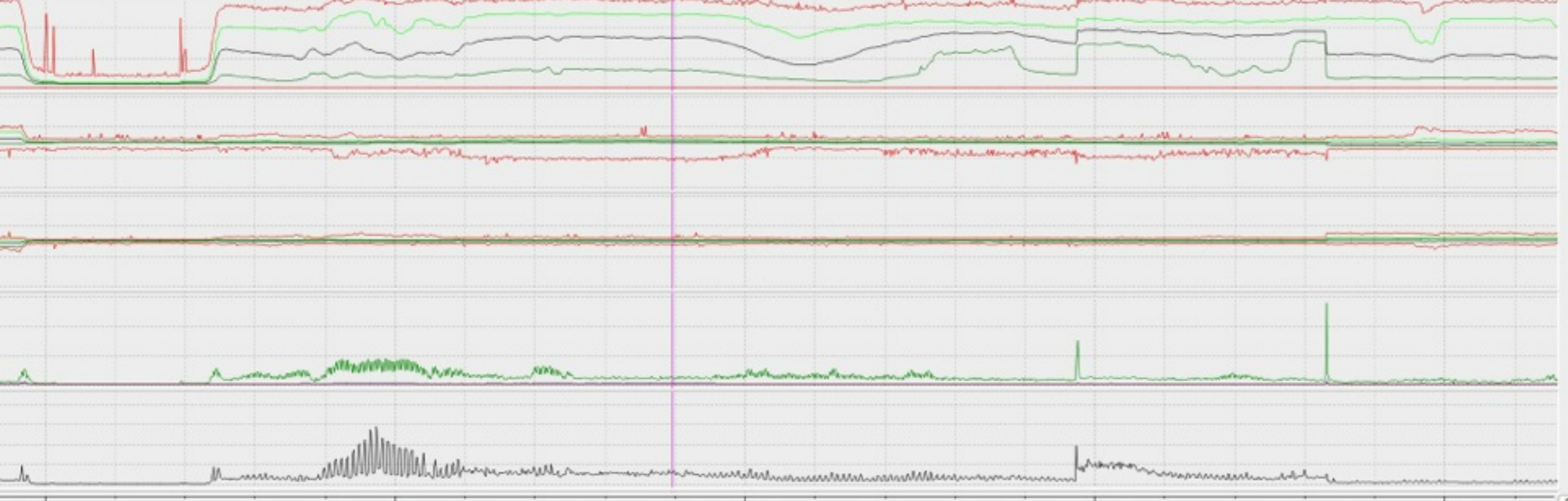






3/dv801/b5939 - this is a RED0/pm/dv801/b5939_pm_tbe.mov

YDiff UDiff VDiff Diffs Sat Hue TDUT VREP BRNG CropW CropH CropF MSEF PSNR



- YDiff
- UDiff
- VDiff
- Diffs
- Sat
- Hue
- TDUT
- VREP
- BRNG
- CropW
- CropH
- CropF
- MSEF
- PSNR
- LMAX
- LMIN
- YDC
- TDIT



00:16:07.935

Frame 29009

Next +0.5x +1x +2x



dv801jb5939_pm_tbe.mov



00:16:07





<http://bavc.org/qctools>

<http://github.org/bavc/qctools>

@BAVCpreserve #ffmpeg #amia14 @dericed



**NATIONAL
ENDOWMENT
FOR THE
HUMANITIES**

bavc
BAY AREA VIDEO COALITION